



IVD

In-vitro diagnostic antibody and antigen



PRODUCTS LIST

Inflammation

Cardiovascular disease

Apply for sample FOC(Free of charge)

- 1.The shipping fee is US\$169.00. We bear \$ 69.00. You need to pay US\$100.00.
- 2.You can apply for up to two samples.

1. How to apply:

Please download the document and fill in the form. Send it to hqq@genemedi.net for application for samples.




 [Application document download](#)

2. The full list of sample FOC

COVID-19 PRODUCT LIST:

 [COVID-19 Diagnostics Vaccine list](#)

IVD PRODUCT LIST:

-  [Inflammation & Cardiovascular Disease Antigens & antibodies list](#)
-  [Infectious disease \(Influenza A/B, toxoplasma,etc\) Antigens & antibodies list](#)
-  [Diagnostic antibodies & antigens list of Bone metabolism, tumor, liver, fibrosis, kidney, neuropathy, fertility, gastric, diabetes](#)

ANIMAL HEALTH PRODUCT LIST:

 [Animal health \(avian, pig, fish, pet, Ruminant,etc\) Antigens & antibodies list](#)

SMALL MOLECULES PRODUCT LIST:

 [Small molecules \(Erythromycin, Calcitonin, Aflatoxin M1,etc\) Antigens & antibodies list](#)

GeneMedi is a BioTech with strong expertise in Gene&Biogenetics discovery. We are committed to providing high-quality antigens and antibodies as core ingredients for in-vitro diagnostics, Food & Feed & Environmental Safety, animal health test and new drug discovery.

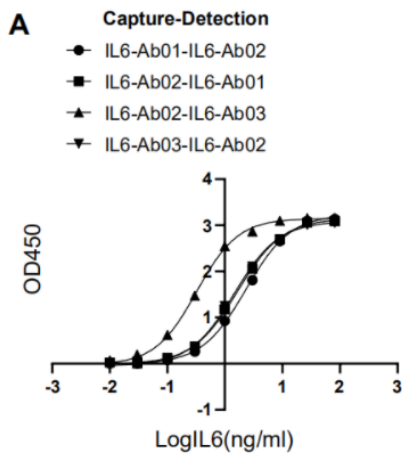
Part 1

Antibodies and antigens for inflammation and cytokine release syndrome (CRS) testing- PCT, CRP, IL-6, SAA, IFN γ , AQP4, HBP, MOG

Cytokine release syndrome (CRS) is an acute systemic inflammatory syndrome characterized by fever and multiple organ dysfunction. Genemedi produces core diagnostic ingredients for test of systemic inflammation and CRS caused by infectious diseases or sepsis-related organ failure. GeneMedi offers paired antibodies (monoclonal antibody, mab) and antigens of inflammatory syndrome and cytokine release syndrome (CRS) biomarkers including: procalcitonin (PCT) antigens and paired antibodies (anti-PCT), C-reactive protein (CRP) antigens and paired antibodies (anti-CRP), Serum amyloid A protein (SAA) antigens and paired antibodies (anti-SAA), interleukin-6 (IL-6) antigens and paired antibodies (anti-IL6 or anti-IL-6) and so on.

All the antibodies of inflammation and CRS test are suitable for in functional ELISA, and other immunoassays in diagnostics. The antibody can act as a Capture antibody and detection antibody.

GeneMedi's IL-6 (Interleukin 6) Antibody Pair Validation In Sandwich ELISA

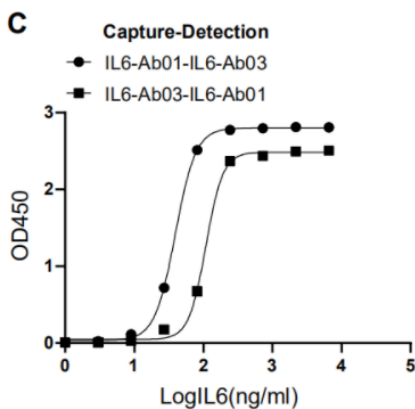


B

Capture-Detection Pair	EC50 (ng/ml)
IL6-Ab01-IL6-Ab02	2.331
IL6-Ab02-IL6-Ab01	1.658
IL6-Ab02-IL6-Ab03	0.3231
IL6-Ab03-IL6-Ab02	1.456

Figure 1 | GeneMedi's IL-6 antibody pair validation with IL-6 antigen (IL6-Ag01) in sandwich ELISA.

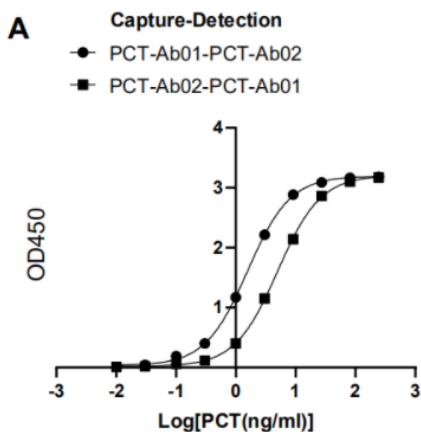
Abbreviation	Description
IL6-Ab01	GMP-h-IL6-Ab01
IL6-Ab02	GMP-h-IL6-Ab02
IL6-Ab03	GMP-h-IL6-Ab03
IL6-Ag01	GMP-h-IL6-Ag01



D

Capture-Detection Pair	EC50 (ng/ml)
IL6-Ab01-IL6-Ab03	39.33
IL6-Ab03-IL6-Ab01	109

Figure 2 | GeneMedi's PCT antibody pair validation with PCT antigen (PCT-Ag01) in sandwich ELISA.



B

Capture-Detection Pair	EC50 (ng/ml)
PCT-Ab01-PCT-Ab02	1.567
PCT-Ab02-PCT-Ab01	4.992

Abbreviation	Description
PCT-Ab01	GMP-h-PCT-Ab01
PCT-Ab02	GMP-h-PCT-Ab02
PCT-Ag01	GMP-h-PCT-Ag01

GeneMedi's Product list

Cat No.	Antibody/Antigen Name	Source (Expression Host)	Isotypes	Bioactivity validation
GMP-h-IL6- Ag01	Recombinant human IL-6 Protein	E.coli	Recombinant Antigen	Antibody Binding, Immunogen in Sandwich Elisa, lateral-flow tests, and other immunoassays as control material in IL-6 level test and inflammation and cytokine release syndrome (CRS) evaluation.
GMP-h-IL6-Ab01	Anti-human IL-6 mouse monoclonal antibody(mAb)	Hybridoma	Mouse IgG	human IL-6 protein binding, ELISA validated as capture antibody and detection antibody GMP-h-IL6Ab02 is pair recommendation with GMP-h-IL6Ab02, GMP-h-IL6Ab03 in IL-6 level test and inflammation and cytokine release syndrome (CRS) evaluation.
GMP-h-IL6-Ab02	Anti-human IL-6 mouse monoclonal antibody(mAb)	Hybridoma	Mouse IgG	
GMP-h-IL6-Ab03	Anti-human IL-6 mouse monoclonal antibody(mAb)	Hybridoma	Mouse IgG	
GMP-h-PCT- Ag01	Recombinant human PCT Protein (His Tag)	Human cells	Recombinant Antigen	human PCT (Procalcitonin) antibody Binding, Immunogen in Sandwich Elisa, lateral-flow tests, and other immunoassays as control material in PCT (Procalcitonin) level test and inflammation and cytokine release syndrome (CRS) evaluation.
GMP-h-PCT-Ab01	Anti-human PCT mouse monoclonal antibody(mAb)	Hybridoma	Mouse IgG	human PCT (Procalcitonin) protein binding, ELISA validated as capture antibody and detection antibody. GMP-h-PCTAb02 is pair recommendation with GMP-h-PCTAb02, GMP-h-PCTAb03, GMP-h-PCTAb04 in PCT (Procalcitonin) level test and inflammation and cytokine release syndrome (CRS) evaluation.
GMP-h-PCT-Ab02	Anti-human PCT mouse monoclonal antibody(mAb)	Hybridoma	Mouse IgG	
GMP-h-PCT-Ab03	Anti-human PCT mouse monoclonal antibody(mAb)	Hybridoma	Mouse IgG	
GMP-h-PCT-Ab04	Anti-human PCT mouse monoclonal antibody(mAb)	Hybridoma	Mouse IgG	
GMP-h-CRP- Ag01	Recombinant human CRP Protein (His Tag)	E.coli	Recombinant Antigen	human C-reactive protein (CRP) antibody Binding, Immunogen in Sandwich Elisa, lateral-flow tests, and other immunoassays as control material in C-reactive protein (CRP) level test and inflammation and cytokine release syndrome (CRS) evaluation.
GMP-h-CRP-Ab01	Anti-human CRP mouse monoclonal antibody(mAb)	Hybridoma	Mouse IgG	human CRP (C-reactive protein) protein binding, ELISA validated as capture antibody and detection antibody. GMP-h-CRPAb02 is pair recommendation with GMP-h-CRPAb02 in C-reactive protein (CRP) level test and inflammation and cytokine release syndrome (CRS) evaluation.
GMP-h-CRP-Ab02	Anti-human CRP mouse monoclonal antibody(mAb)	Hybridoma	Mouse IgG	
GMP-h-SAA- Ag01	Recombinant human SAA Protein (His Tag)	E.coli	Recombinant Antigen	human SAA (Serum amyloid A protein) antibody Binding, Immunogen in Sandwich Elisa, lateral-flow tests, and other immunoassays as control material in SAA (Serum amyloid A protein) level test and inflammation and cytokine release syndrome (CRS) evaluation.
GMP-h-SAA- Ag02	Recombinant human SAA Protein (His Tag)	Baculovirus-Insect Cells	Recombinant Antigen	
GMP-h-SAA- Ab01	Anti-human SAA (Serum amyloid A protein) mouse monoclonal antibody(mAb)	Hybridoma	Mouse IgG	human SAA (Serum amyloid A protein) protein binding, ELISA validated as capture antibody and detection antibody. GMP-h-SAAAb01 is pair recommendation with GMP-h-SAAAb02 in SAA (Serum amyloid A protein) level test and inflammation and cytokine release syndrome (CRS) evaluation.
GMP-h-SAA- Ab02	Anti-human SAA (Serum amyloid A protein) mouse monoclonal antibody(mAb)	Hybridoma	Mouse IgG	
GMP-IFN γ -Ab	Anti-Interferon gamma (IFNγ) mouse monoclonal antibody(mAb)	Hybridoma	Mouse IgG	Human Interferon gamma (IFN γ) protein binding, ELISA validated as capture antibody and detection antibody. Pair in IFN γ level test and inflammation/autoimmune/ inflammatory disease evaluation.
GMP-AQP4-Ag	Recombinant aquaporin-4 (AQP4, His Tag)	E.coli	Recombinant Antigen	aquaporin-4 (AQP4) Antibody Binding, Immunogen in Sandwich ELISA test, Lateral flow immunoassay (LFIA), colloidal gold immunochromatographic assay, Chemiluminescent immunoassay (CLIA), turbidimetric inhibition immuno assay (TINIA), immunonephelometry and POCT
GMP-HBP-Ag	Recombinant Heparin-binding protein (HBP, His Tag)	E.coli	Recombinant Antigen	Heparin-binding protein (HBP) Antibody Binding, Immunogen in Sandwich ELISA test, Lateral flow immunoassay (LFIA), colloidal gold immunochromatographic assay, Chemiluminescent immunoassay (CLIA), turbidimetric inhibition immuno assay (TINIA), immunonephelometry and POCT
GMP-MOG-Ag	Recombinant myelin oligodendrocyte glycoprotein (MOG, His Tag)	E.coli	Recombinant Antigen	myelin oligodendrocyte glycoprotein (MOG) Antibody Binding, Immunogen in Sandwich ELISA test, Lateral flow immunoassay (LFIA), colloidal gold immunochromatographic assay, Chemiluminescent immunoassay (CLIA), turbidimetric inhibition immuno assay (TINIA), immunonephelometry and POCT

Part 2

Diagnostic antibodies and antigens for Heart disease & Cardiovascular disease biomarkers testing

Cardiovascular biomarkers play an essential role in the diagnosis, risk stratification and treatment of patients with cardiac diseases including acute myocardial infarction, cardiac fibrosis and heart failure.

Genemedi produces core diagnostic ingredients for test of heart diseases and related syndrome.

GeneMedi offers paired antibodies (monoclonal antibody, mab) and antigens of cardiac biomarkers for diagnostics of cardiovascular disease and heart injury including: Myeloperoxidase (MPO) antigens and paired antibodies(anti-MPO), matrix metalloproteinase-3 (MMP3) antigens and paired antibodies(anti-MMP3), Growth differentiation factor-15 (GDF-15) antigens and paired antibodies(anti-GDF15), Creatine Kinase MB (CK-MB) antigens and paired antibodies(anti-CK-MB), Myoglobin (Myo) antigens and paired antibodies(anti-Myoglobin), soluble ST2 (sST2) antigens and paired antibodies(anti-sST2) and so on.

All the antibodies and antigens for Heart disease & Cardiovascular disease biomarkers testing are suitable for functional ELISA, and other immunoassays in diagnostics. The antibody can act as a capture antibody and detection antibody. Antigens are validated as positive control materials.

Product list

MPO

Cat No.	Antibody/Antigen Name	Expression platform	Isotypes	Bioactivity validation
GMP-h-MPO-Ag01	Recombinant human Myeloperoxidase (MPO) Protein	E.coli	Recombinant Antigen	Myeloperoxidase (MPO) Antibody Binding, Immunogen in Sandwich Elisa, lateral-flow tests, and other immunoassays as control material in MPO level test for inflammation test and heart failure diagnosis.
GMP-h-MPO-Ab01	Anti-human Myeloperoxidase (MPO) mouse monoclonal antibody(mAb)	Hybridoma	Mouse IgG	ELISA validated as capture antibody and detection antibody Pair recommendation with GMP-h-MPO-Ab01,GMP-h-MPO-Ab02,GMP-h-MPO-Ab03 in Myeloperoxidase (MPO) biomarker test for inflammation test and heart failure diagnosis.
GMP-h-MPO-Ab02	Anti-human Myeloperoxidase (MPO) mouse monoclonal antibody(mAb)	Hybridoma	Mouse IgG	
GMP-h-MPO-Ab03	Anti-human Myeloperoxidase (MPO) mouse monoclonal antibody(mAb)	Hybridoma	Mouse IgG	

MMP-3

Cat No.	Antibody/Antigen Name	Expression platform	Isotypes	Bioactivity validation
GMP-h-MMP-3-Ag01	Recombinant human matrix metalloproteinase-3 (MMP3) Protein	E.coli	Recombinant Antigen	matrix metalloproteinase-3 (MMP3) Antibody Binding, Immunogen in Sandwich Elisa, lateral-flow tests, and other immunoassays as control material in MMP3 level test for inflammation test and heart failure diagnosis.
GMP-h-MMP-3-Ab01	Anti-human matrix metalloproteinase-3 (MMP3) mouse monoclonal antibody(mAb)	Hybridoma	Mouse IgG	ELISA validated as capture antibody and detection antibody. Pair recommendation with GMP-h-MMP-3-Ab01, GMP-h-MMP-3-Ab02, GMP-h-MMP-3-Ab03 in matrix metalloproteinase-3 (MMP3) biomarker test for inflammation test and heart failure diagnosis.
GMP-h-MMP-3-Ab02	Anti-human matrix metalloproteinase-3 (MMP3) mouse monoclonal antibody(mAb)	Hybridoma	Mouse IgG	
GMP-h-MMP-3-Ab03	Anti-human matrix metalloproteinase-3 (MMP3) mouse monoclonal antibody(mAb)	Hybridoma	Mouse IgG	

GDF-15

Cat No.	Antibody/Antigen Name	Expression platform	Isotypes	Bioactivity validation
GMP-h-GDF-15-Ag0 <u>1</u>	Recombinant human Growth differentiation factor-15 (GDF-15) Protein	E.coli	Recombinant Antigen	Growth differentiation factor-15 (GDF-15) Antibody Binding, Immunogen in Sandwich Elisa, lateral-flow tests, and other immunoassays as control material in GDF-15 level test for heart failure, cardiovascular diseases, diabetes diagnosis and mitochondrial disorder disease test.
GMP-h-GDF-15-Ab0 <u>1</u>	Anti-human Growth differentiation factor-15 (GDF-15) mouse monoclonal antibody(mAb)	Hybridoma	Mouse IgG	ELISA validated as capture antibody and detection antibody. Pair recommendation with GMP-h-GDF-15-Ab01, GMP-h-GDF-15-Ab02, GMP-h-GDF-15-Ab03 in Growth differentiation factor-15 (GDF-15) biomarker test for heart failure, cardiovascular diseases, diabetes diagnosis and mitochondrial disorder disease test.
GMP-h-GDF-15-Ab0 <u>2</u>	Anti-human Growth differentiation factor-15 (GDF-15) mouse monoclonal antibody(mAb)	Hybridoma	Mouse IgG	
GMP-h-GDF-15-Ab0 <u>3</u>	Anti-human Growth differentiation factor-15 (GDF-15) mouse monoclonal antibody(mAb)	Hybridoma	Mouse IgG	

CK-MB

Cat No.	Antibody/Antigen Name	Expression platform	Isotypes	Bioactivity validation
GMP-h-CK-MB-Ag01	Recombinant human Creatine Kinase MB (CK-MB) Protein	E.coli	Recombinant Antigen	Creatine Kinase MB (CK-MB) Antibody Binding, Immunogen in Sandwich Elisa, lateral-flow tests, and other immunoassays as control material in CK-MB((creatine kinase myocardial band)) level test for acute myocardial infarction test and heart failure diagnosis.
GMP-h-CK-MB-Ab01	Anti-human Creatine Kinase MB (CK-MB) mouse monoclonal antibody(mAb)	Hybridoma	Mouse IgG	ELISA validated as capture antibody and detection antibody. Pair recommendation with GMP-h-CK-MB-Ab01, GMP-h-CK-MB-Ab02, GMP-GMP-h-CK-MB-Ab03, GMP-h-CK-MB-Ab04 in Creatine Kinase MB (CK-MB) cardiac biomarker test for acute myocardial infarction test and heart failure diagnosis.
GMP-h-CK-MB-Ab02	Anti-human Creatine Kinase MB (CK-MB) mouse monoclonal antibody(mAb)	Hybridoma	Mouse IgG	
GMP-h-CK-MB-Ab03	Anti-human Creatine Kinase MB (CK-MB) mouse monoclonal antibody(mAb)	Hybridoma	Mouse IgG	
GMP-h-CK-MB-Ab04	Anti-human Creatine Kinase MB (CK-MB) mouse monoclonal antibody(mAb)	Hybridoma	Mouse IgG	

Myo

Cat No.	Antibody/Antigen Name	Expression platform	Isotypes	Bioactivity validation
GMP-h-Myo-Ag01	Recombinant human Myoglobin (Myo) Protein	E.coli	Recombinant Antigen	Myoglobin (Myo) Antibody Binding, Immunogen in Sandwich Elisa, lateral-flow tests, and other immunoassays as control material in Myoglobin (Myo) level test for heart muscle damage test and heart failure diagnosis.
GMP-h-Myo-Ab01	Anti-human Myoglobin (Myo) mouse monoclonal antibody(mAb)	Hybridoma	Mouse IgG	ELISA validated as capture antibody and detection antibody. Pair recommendation with GMP-h-Myo-Ab01, GMP-h-Myo-Ab02, GMP-h-Myo-Ab03, GMP-h-Myo-Ab04 in Myoglobin (Myo) cardiac biomarker test for heart muscle damage test and heart failure diagnosis.
GMP-h-Myo-Ab02	Anti-human Myoglobin (Myo) mouse monoclonal antibody(mAb)	Hybridoma	Mouse IgG	
GMP-h-Myo-Ab03	Anti-human Myoglobin (Myo) mouse monoclonal antibody(mAb)	Hybridoma	Mouse IgG	
GMP-h-Myo-Ab04	Anti-human Myoglobin (Myo) mouse monoclonal antibody(mAb)	Hybridoma	Mouse IgG	

Soluble ST2

Cat No.	Antibody/Antigen Name	Expression platform	Isotypes	Bioactivity validation
GMP-h-Soluble ST2-Ag01	Recombinant human soluble ST2 (sST2) Protein	E.coli	Recombinant Antigen	Soluble ST2 (sST2) Antibody Binding, Immunogen in Sandwich Elisa, lateral-flow tests, and other immunoassays as control material in soluble ST2 (sST2) level test for heart failure diagnosis, myocardial wall stress and activation of cardiac fibrosis.
GMP-h-Soluble ST2-Ab01	Anti-human human soluble ST2 (sST2) mouse monoclonal antibody(mAb)	Hybridoma	Mouse IgG	ELISA validated as capture antibody and detection antibody in soluble ST2 (sST2) cardiac biomarker test for heart failure diagnosis, myocardial wall stress and activation of cardiac fibrosis.

cTnT

Cat No.	Antibody/Antigen Name	Expression platform	Isotypes	Bioactivity validation
GMP-cTnT-Ab	Anti-cardiac troponin T (cTnT) mouse monoclonal antibody(mAb)	Hybridoma	Mouse IgG	Human cardiac troponin T (cTnT) protein binding, ELISA validated as capture antibody and detection antibody. Pair in cTnT level test and Cardiovascular Disease evaluation.

NT-proBNP

Cat No.	Antibody/Antigen Name	Expression platform	Isotypes	Bioactivity validation
GMP-NT-proBNP-Ag;	Recombinant N-terminal prohormone of brain natriuretic peptide (NT-proBNP, His Tag):	E.coli;	Recombinant Antigen;	Antigen:N-terminal prohormone of brain natriuretic peptide (NT-proBNP) Antibody Binding;
GMP-NT-proBNP-Ab	Anti-N-terminal prohormone of brain natriuretic peptide (NT-proBNP) mouse monoclonal antibody(mAb)	Hybridoma	Mouse IgG	Antibody:Human N-terminal prohormone of brain natriuretic peptide (NT-proBNP) protein binding, ELISA validated as capture antibody and detection antibody. Pair in NT-proBNP level test and Cardiovascular Disease evaluation.

Dig

Cat No.	Antibody/Antigen Name	Expression platform	Isotypes	Bioactivity validation
GMP-Dig-Ab	Anti-Digoxigenin (Dig) mouse monoclonal antibody(mAb)	Hybridoma	Mouse IgG	Human Digoxigenin (Dig) protein binding, ELISA validated as capture antibody and detection antibody. Pair in Dig level test and Cardiovascular Disease evaluation.

H-FABP

Cat No.	Antibody/Antigen Name	Expression platform	Isotypes	Bioactivity validation
GMP-H-FABP-Ag;	Recombinant Heart-type Fatty Acid-Binding Protein (H-FABP, His Tag):	E.coli;	Recombinant Antigen;	Heart-type Fatty Acid-Binding Protein (H-FABP) Antibody Binding

GMP-H-FABP-Ab	Anti-Heart-type Fatty Acid-Binding Protein (H-FABP) mouse monoclonal antibody(mAb)	Hybridoma	Mouse IgG	Human Heart-type Fatty Acid-Binding Protein (H-FABP) protein binding, ELISA validated as capture antibody and detection antibody. Pair in H-FABP level test and Cardiovascular Disease evaluation.
-------------------------------	--	-----------	-----------	--

ApoA

Cat No.	Antibody/Antigen Name	Expression platform	Isotypes	Bioactivity validation
GMP-ApoA-Ag	Recombinant Apolipoprotein A (ApoA, His Tag)	E.coli	Recombinant Antigen	Apolipoprotein A (ApoA) Antibody Binding, Immunogen in Sandwich ELISA test, Lateral flow immunoassay (LFIA), colloidal gold immunochromatographic assay, Chemiluminescent immunoassay (CLIA), turbidimetric inhibition immuno assay (TINIA), immunonephelometry and POCT

ApoE

Cat No.	Antibody/Antigen Name	Expression platform	Isotypes	Bioactivity validation
GMP-ApoE-Ag	Recombinant Apolipoprotein E (ApoE, His Tag)	E.coli	Recombinant Antigen	Apolipoprotein E (ApoE) Antibody Binding, Immunogen in Sandwich ELISA test, Lateral flow immunoassay (LFIA), colloidal gold immunochromatographic assay, Chemiluminescent immunoassay (CLIA), turbidimetric inhibition immuno assay (TINIA), immunonephelometry and POCT

BNP

Cat No.	Antibody/Antigen Name	Expression platform	Isotypes	Bioactivity validation
GMP-BNP-Ag	Recombinant B-type natriuretic peptide (BNP, His Tag)	E.coli	Recombinant Antigen	B-type natriuretic peptide (BNP) Antibody Binding, Immunogen in Sandwich ELISA test, Lateral flow immunoassay (LFIA), colloidal gold immunochromatographic assay, Chemiluminescent immunoassay (CLIA), turbidimetric inhibition immuno assay (TINIA), immunonephelometry and POCT

D-Dimer

Cat No.	Antibody/Antigen Name	Expression platform	Isotypes	Bioactivity validation
GMP-D-Dimer-Ag;	Recombinant D dimer (D-Dimer, His Tag);	E.coli;	Recombinant Antigen;	D dimer (D-Dimer) Antibody Binding, Immunogen in Sandwich ELISA test, Lateral flow immunoassay (LFIA),colloidal gold immunochromatographic assay, Chemiluminescent immunoassay (CLIA), turbidimetric inhibition immuno assay (TINIA), immunonephelometry and POCT;
GMP-D-Dimer-Ab	Anti-D dimer (D-Dimer) mouse monoclonal antibody(mAb)	Hybridoma	Mouse IgG	Human D dimer (D-Dimer) protein binding, ELISA validated as capture antibody and detection antibody. Pair in D-Dimer level test and Cardiovascular Disease evaluation.

cTnI

Cat No.	Antibody/Antigen Name	Expression platform	Isotypes	Bioactivity validation
GMP-cTnI-Ag;	Recombinant Cardiac troponin I (cTnI, His Tag);	E.coli;	Recombinant Antigen;	Cardiac troponin I (cTnI) Antibody Binding, Immunogen in Sandwich ELISA test, Lateral flow immunoassay (LFIA),colloidal gold immunochromatographic assay, Chemiluminescent immunoassay (CLIA), turbidimetric inhibition immuno assay (TINIA), immunonephelometry and POCT;
GMP-cTnI-Ab	Anti-cardiac troponin I (cTnI) mouse monoclonal antibody(mAb)	Hybridoma	Mouse IgG	Antibody:Human cardiac troponin I (cTnI) protein binding, ELISA validated as capture antibody and detection antibody. Pair in cTnI level test and Cardiovascular Disease evaluation.

proBNP

Cat No.	Antibody/Antigen Name	Expression platform	Isotypes	Bioactivity validation
GMP-proBNP-Ag	Recombinant pro B-type natriuretic peptide (proBNP, His Tag)	E.coli	Recombinant Antigen	pro B-type natriuretic peptide (proBNP) Antibody Binding, Immunogen in Sandwich ELISA test, Lateral flow immunoassay (LFIA), colloidal gold immunochromatographic assay, Chemiluminescent immunoassay (CLIA), turbidimetric inhibition immuno assay (TINIA), immunonephelometry and POCT

Note:

There are still some products in the development process and have not yet been added to the table. If you do not find the product you want in the brochure, please communicate with us in the following ways:

Email: support@genemedi.net or sales@genemedi.net

Leave your message, we will reply in 1 day: www.genemedi.net/contact

About GeneMedi

GeneMedi

GeneMedi is a BioTech company with strong expertise in Gene&Biogitics discovery, artificail design, and State-of-the-Art Manufacturing.

Our scientists and experts serve global clients in biologics discovery including antibodies, recombinant protein and multiple types of viral vectors. GeneMedi offers Pre-made and custom-made recombian protein and antibodies for drug discovery and diagnostic ingredients. GeneMedi help scientists from academic to industry in vectors optimization, cell line development, scalable production, process development and technology transfer. GeneMedi GeneTherapy center also help in gene therapy&gene editing discovery and development.

Our Responsibility

1. Pre-made and custom-made recombinant proteins (Antibodies, Enzymes, Membrane protein, Factors and other antigens) for drug discovery and diagnostics ingredients, high quality, bulk in stock.
2. Membrane Protein & antibodies artificail design, discovery and State-of-the-Art Manufacturing.
3. High quality, scalable, State-of-the-Art Manufacturing in gene therapy vectors including adeno-associated virus (AAV) vector, lentivirus vector and adenovirus vector.
4. AAV gene therapy innovation: AAV capsid evolution and novel AAV generation for next-generation vector of gene therapy.



SOCAIL MEDIA



Email: support@genemedi.net | sales@genemedi.net

Telephone: [+86-21-50478399](tel:+86-21-50478399) **Fax:** [86-21-50478399](tel:86-21-50478399)

Address: 6th Floor, Building No.2, KangXin Road 3377, Shanghai, China

Leave your message, we will reply in 1 day: www.genemedi.net/contact