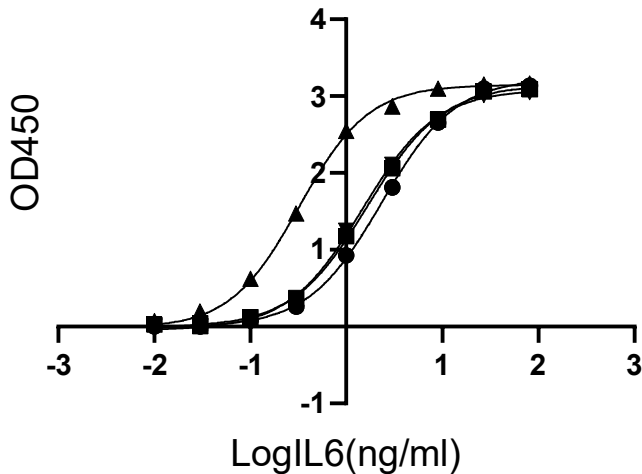


GeneMedi's IL-6 (Interleukin 6) Antibody Pair Validation In Sandwich ELISA

A Capture-Detection

- IL6-Ab01-IL6-Ab02
- IL6-Ab02-IL6-Ab01
- ▲ IL6-Ab02-IL6-Ab03
- ▼ IL6-Ab03-IL6-Ab02

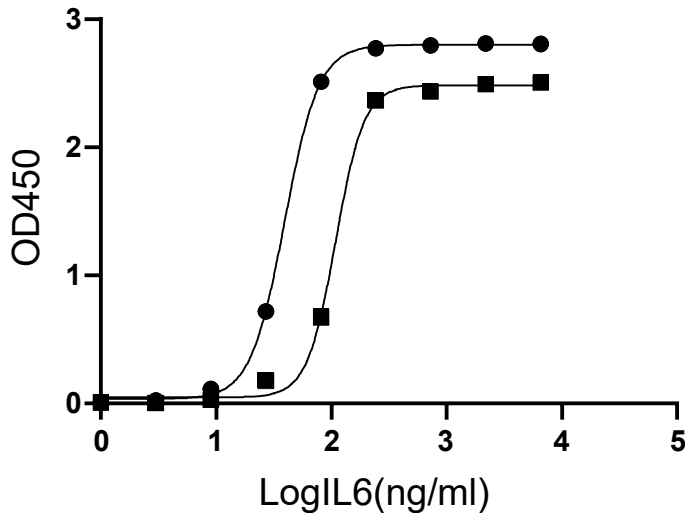


B

Capture-Detection Pair	EC50 (ng/ml)
IL6-Ab01-IL6-Ab02	2.331
IL6-Ab02-IL6-Ab01	1.658
IL6-Ab02-IL6-Ab03	0.3231
IL6-Ab03-IL6-Ab02	1.456

C Capture-Detection

- IL6-Ab01-IL6-Ab03
- IL6-Ab03-IL6-Ab01



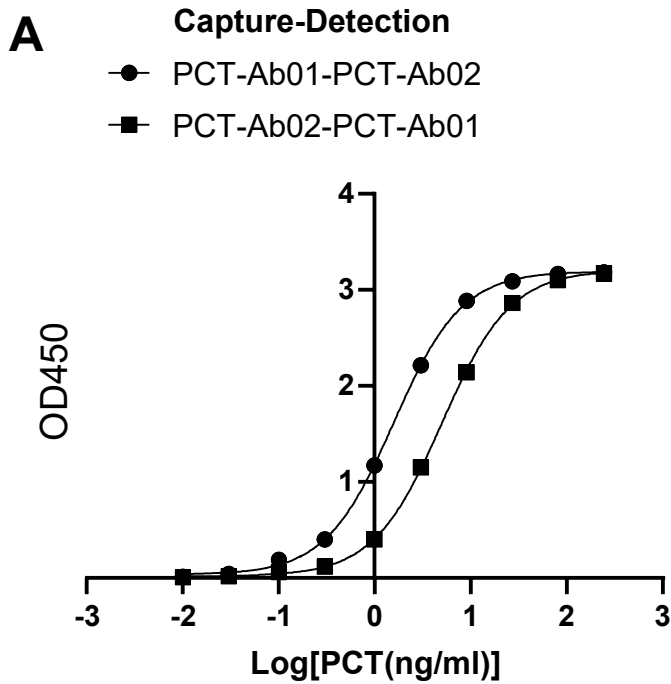
D

Capture-Detection Pair	EC50 (ng/ml)
IL6-Ab01-IL6-Ab03	39.33
IL6-Ab03-IL6-Ab01	109

Figure. GeneMedi's [IL-6 antibody](#) pair validation with IL-6 antigen ([IL6-Ag01](#)) in sandwich ELISA.

Abbreviation	Description
IL6-Ab01	GMP-h-IL6-Ab01
IL6-Ab02	GMP-h-IL6-Ab02
IL6-Ab03	GMP-h-IL6-Ab03
IL6-Ag01	GMP-h-IL6-Ag01

GeneMedi's PCT (procalcitonin) Antibody Pair Validation In Sandwich ELISA



B

Capture-Detection Pair	EC50 (ng/ml)
PCT-Ab01-PCT-Ab02	1.567
PCT-Ab02-PCT-Ab01	4.992

Figure. GeneMedi's [PCT antibody](#) pair validation with PCT antigen ([PCT-Ag01](#)) in sandwich ELISA.

Abbreviation	Description
PCT-Ab01	GMP-h-PCT-Ab01
PCT-Ab02	GMP-h-PCT-Ab02
PCT-Ag01	GMP-h-PCT-Ag01

RELATED PRODUCTS

Diagnostic antibodies and antigens for inflammation and cytokine release syndrome (CRS) testing-PCT, CRP, IL-6, SAA

Cat No.	Antibody/Antigen Name	Source (Expression Host)	Isotypes	Bioactivity validation
GMP-h-IL6-Ag01	Recombinant human IL-6 Protein	E.coli	Recombinant Antigen	Antibody Binding, Immunogen in Sandwich Elisa, lateral-flow tests, and other immunoassays as control material in IL-6 level test and inflammation and cytokine release syndrome (CRS) evaluation.
GMP-h-IL6-Ab01	Anti-human IL-6 mouse monoclonal antibody(mAb)	Hybridoma	Mouse IgG	human IL-6 protein binding, ELISA validated as capture antibody and detection antibody Pair recommendation with GMP-h-IL6Ab02, GMP-h-IL6Ab03 in IL-6 level test and inflammation and cytokine release syndrome (CRS) evaluation.
GMP-h-IL6-Ab02	Anti-human IL-6 mouse monoclonal antibody(mAb)	Hybridoma	Mouse IgG	human IL-6 protein binding, ELISA validated as capture antibody and detection antibody Pair recommendation with GMP-h-IL6Ab01, GMP-h-IL6Ab03 in IL-6 level test and inflammation and cytokine release syndrome (CRS) evaluation.
GMP-h-IL6-Ab03	Anti-human IL-6 mouse monoclonal antibody(mAb)	Hybridoma	Mouse IgG	human IL-6 protein binding, ELISA validated as capture antibody and detection antibody Pair recommendation with GMP-h-IL6Ab01, GMP-h-IL6Ab02 in IL-6 level test and inflammation and cytokine release syndrome (CRS) evaluation.
GMP-h-PCT-Ag01	Recombinant human PCT Protein (His Tag)	Human cells	Recombinant Antigen	human PCT (Procalcitonin) antibody Binding, Immunogen in Sandwich Elisa, lateral-flow tests, and other immunoassays as control material in PCT (Procalcitonin) level test and inflammation and cytokine release syndrome (CRS) evaluation.
GMP-h-PCT-Ab01	Anti-human PCT mouse monoclonal antibody(mAb)	Hybridoma	Mouse IgG	human PCT (Procalcitonin) protein binding, ELISA validated as capture antibody and detection antibody Pair recommendation with GMP-h-PCTAb02, GMP-h-PCTAb03, GMP-h-PCTAb04 in PCT (Procalcitonin) level test and inflammation and cytokine release syndrome (CRS) evaluation.
GMP-h-PCT-Ab02	Anti-human PCT mouse monoclonal antibody(mAb)	Hybridoma	Mouse IgG	human PCT (Procalcitonin) protein binding, ELISA validated as capture antibody and detection antibody Pair recommendation with GMP-h-PCTAb01, GMP-h-PCTAb03, GMP-h-PCTAb04 in PCT (Procalcitonin) level test and inflammation and cytokine release syndrome (CRS) evaluation.
GMP-h-PCT-Ab03	Anti-human PCT mouse monoclonal antibody(mAb)	Hybridoma	Mouse IgG	human PCT (Procalcitonin) protein binding, ELISA validated as capture antibody and detection antibody Pair recommendation with GMP-h-PCTAb01, GMP-h-PCTAb02, GMP-h-PCTAb04 in PCT (Procalcitonin) level test and inflammation and cytokine release syndrome (CRS) evaluation.
GMP-h-PCT-Ab04	Anti-human PCT mouse monoclonal antibody(mAb)	Hybridoma	Mouse IgG	human PCT (Procalcitonin) protein binding, ELISA validated as capture antibody and detection antibody Pair recommendation with GMP-h-PCTAb01, GMP-h-PCTAb02, GMP-h-PCTAb03 in PCT (Procalcitonin) level test and inflammation and cytokine release syndrome (CRS) evaluation.
GMP-h-CRP-Ag01	Recombinant human CRP Protein (His Tag)	E.coli	Recombinant Antigen	human C-reactive protein (CRP) antibody Binding, Immunogen in Sandwich Elisa, lateral-flow tests, and other immunoassays as control material in C-reactive protein (CRP) level test and inflammation and cytokine release syndrome (CRS) evaluation.
GMP-h-CRP-Ab01	Anti-human CRP mouse monoclonal antibody(mAb)	Hybridoma	Mouse IgG	human CRP (C-reactive protein) protein binding, ELISA validated as capture antibody and detection antibody Pair recommendation with GMP-h-CRPAb02 in C-reactive protein (CRP) level test and inflammation and cytokine release syndrome (CRS) evaluation.
GMP-h-CRP-Ab02	Anti-human CRP mouse monoclonal antibody(mAb)	Hybridoma	Mouse IgG	human CRP (C-reactive protein) protein binding, ELISA validated as capture antibody and detection antibody Pair recommendation with GMP-h-CRPAb01 in C-reactive protein (CRP) level test and inflammation and cytokine release syndrome (CRS) evaluation.
GMP-h-SAA-Ag01	Recombinant human SAA Protein (His Tag)	E.coli	Recombinant Antigen	human SAA (Serum amyloid A protein) antibody Binding, Immunogen in Sandwich Elisa, lateral-flow tests, and other immunoassays as control material in SAA (Serum amyloid A protein) level test and inflammation and cytokine release syndrome (CRS) evaluation.
GMP-h-SAA-Ag02	Recombinant human SAA Protein (His Tag)	Baculovirus-Insect Cells	Recombinant Antigen	human SAA (Serum amyloid A protein) antibody Binding, Immunogen in Sandwich Elisa, lateral-flow tests, and other immunoassays as control material in SAA (Serum amyloid A protein) level test and inflammation and cytokine release syndrome (CRS) evaluation.
GMP-h-SAA-Ab01	Anti-human SAA (Serum amyloid A protein) mouse monoclonal antibody(mAb)	Hybridoma	Mouse IgG	human SAA (Serum amyloid A protein) protein binding, ELISA validated as capture antibody and detection antibody Pair recommendation with GMP-h-SAAAb02 in SAA (Serum amyloid A protein) level test and inflammation and cytokine release syndrome (CRS) evaluation.
GMP-h-SAA-Ab02	Anti-human SAA (Serum amyloid A protein) mouse monoclonal antibody(mAb)	Hybridoma	Mouse IgG	human SAA (Serum amyloid A protein) protein binding, ELISA validated as capture antibody and detection antibody Pair recommendation with GMP-h-SAAAb01 in SAA (Serum amyloid A protein) level test and inflammation and cytokine release syndrome (CRS) evaluation.